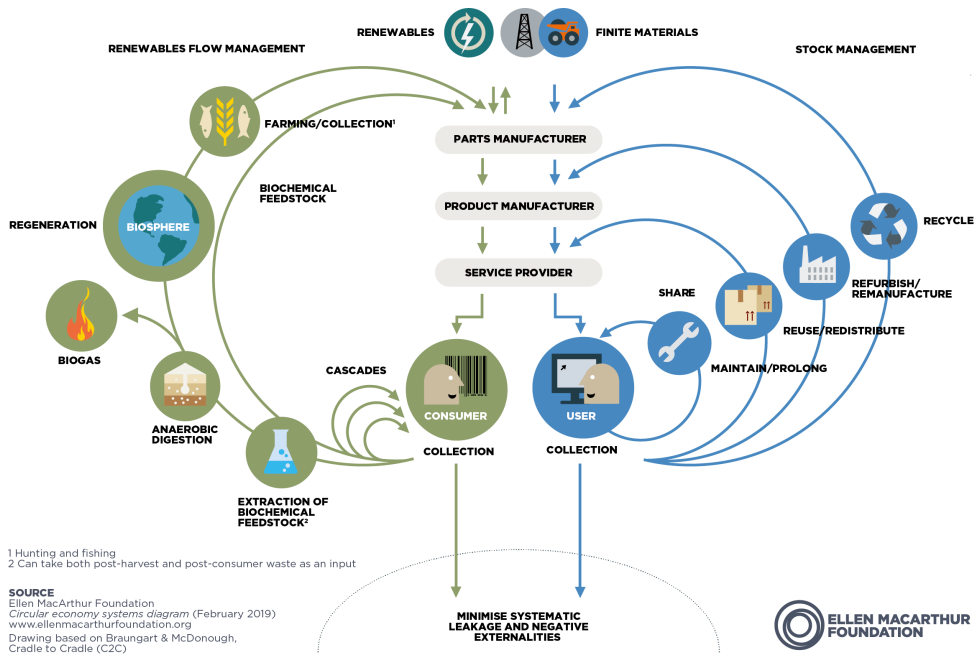


'Traditional' Product Stewardship / Extended Producer Responsibility (EPR) is overly recycling-focused. Stewardship should address: 1



- reuse, public health & safety, supply chain risks, etc.
- 'traditional' packaging and electronics, plus textiles, PVs, sharps, etc.
- carbon dioxide removal (CDR), energy & climate change
- circular economy, DfE and UN SDGs



'Traditional' Product Stewardship / Extended Producer Responsibility (EPR) is overly recycling-focused. Stewardship should address: 2

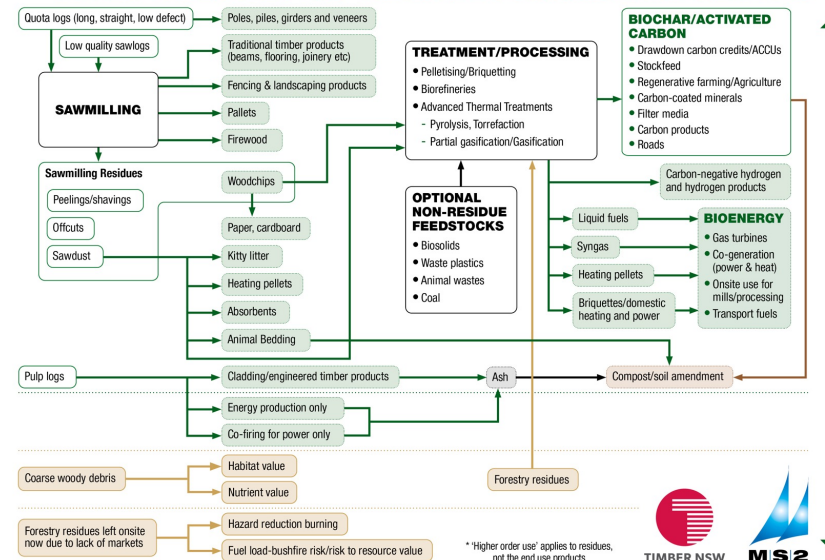


- transition from linear models to circular/ cradle to cradle
- broader sustainability considerations/SDGs
- higher order use and cross-sector collaboration
- improved risk management
- regenerative practices
- biodiversity
- food security/water security

SUSTAINABLE DEVELOPMENT GOALS



HIGHER ORDER USES AND VALUE-ADD FOR TIMBER AND RESIDUES*

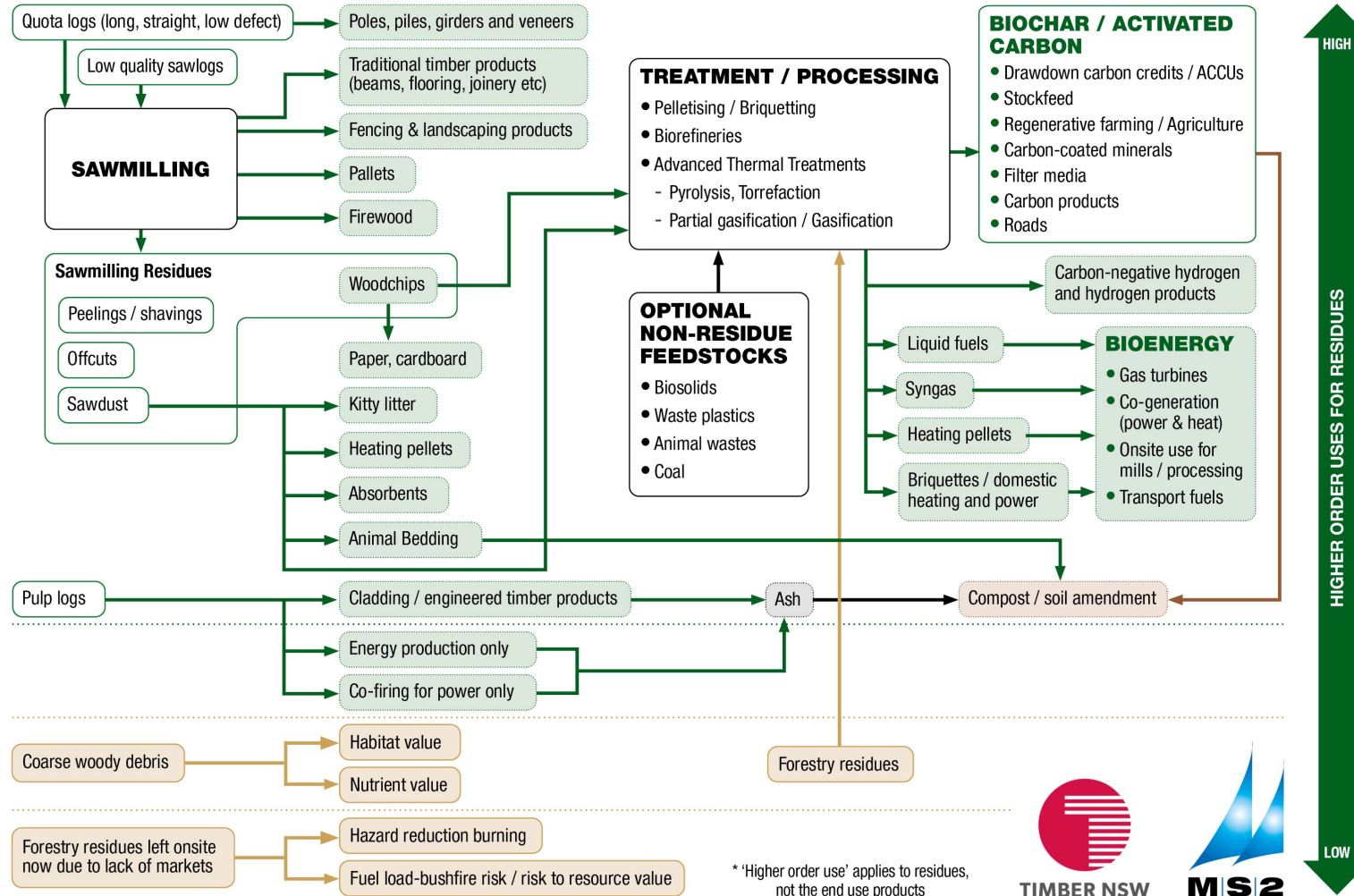


*Higher order use applies to residues, not the end use products

Raise Awareness of Higher Order Uses and Integration



HIGHER ORDER USES AND VALUE-ADD FOR TIMBER AND RESIDUES*



* 'Higher order use' applies to residues, not the end use products



- Restricted social license to operate and limited resource supplies can have a significant effect on feedstock availability
- Smaller, varied projects can build local resilience and social license to operate whilst helping prove various technologies to regulators
- Too many sectors are still operating in silos; need to collaborate better and look for synergies and circular approaches
- Need a fundamental rethink around technologies, feedstocks, risk management and regulatory approaches to address priorities including CDR, stewardship, circular economy, higher order uses, resource availability and systemic solutions
- Position industry to take advantage of emerging opportunities
- Seek to address regulatory barriers